

ROCKEFELLER GROUP LOGISTICS CENTER AT **CARNEYS POINT**

FOREST LANE, CARNEYS POINT, NJ

**DELIVERING
Q1 / Q2 2025**

530,000 SF & 596,443 SF



ROCKEFELLERGROUPCARNEYSPOINT.COM

ROCKEFELLER
GROUP

CBRE

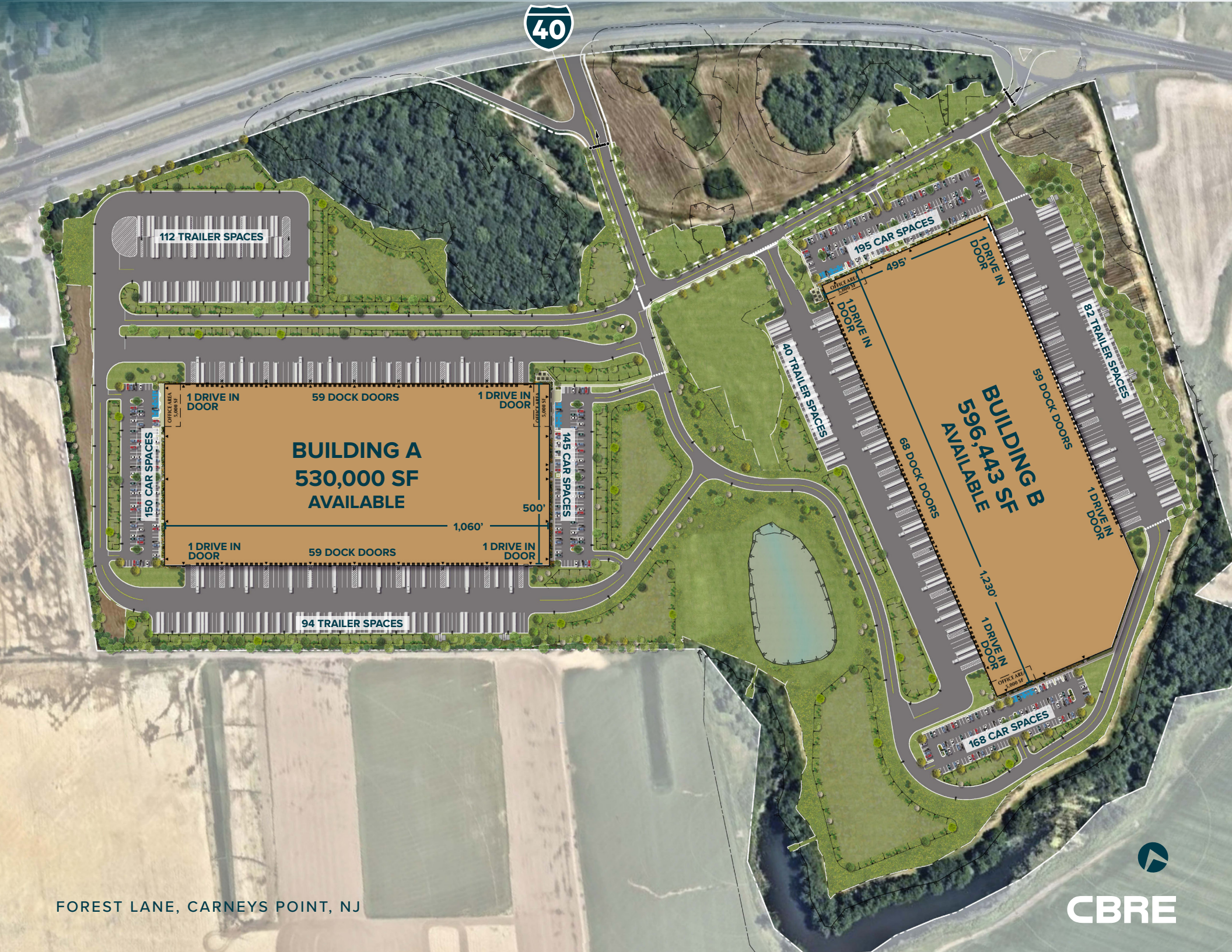
PROPERTY DETAILS

SPECIFICATIONS

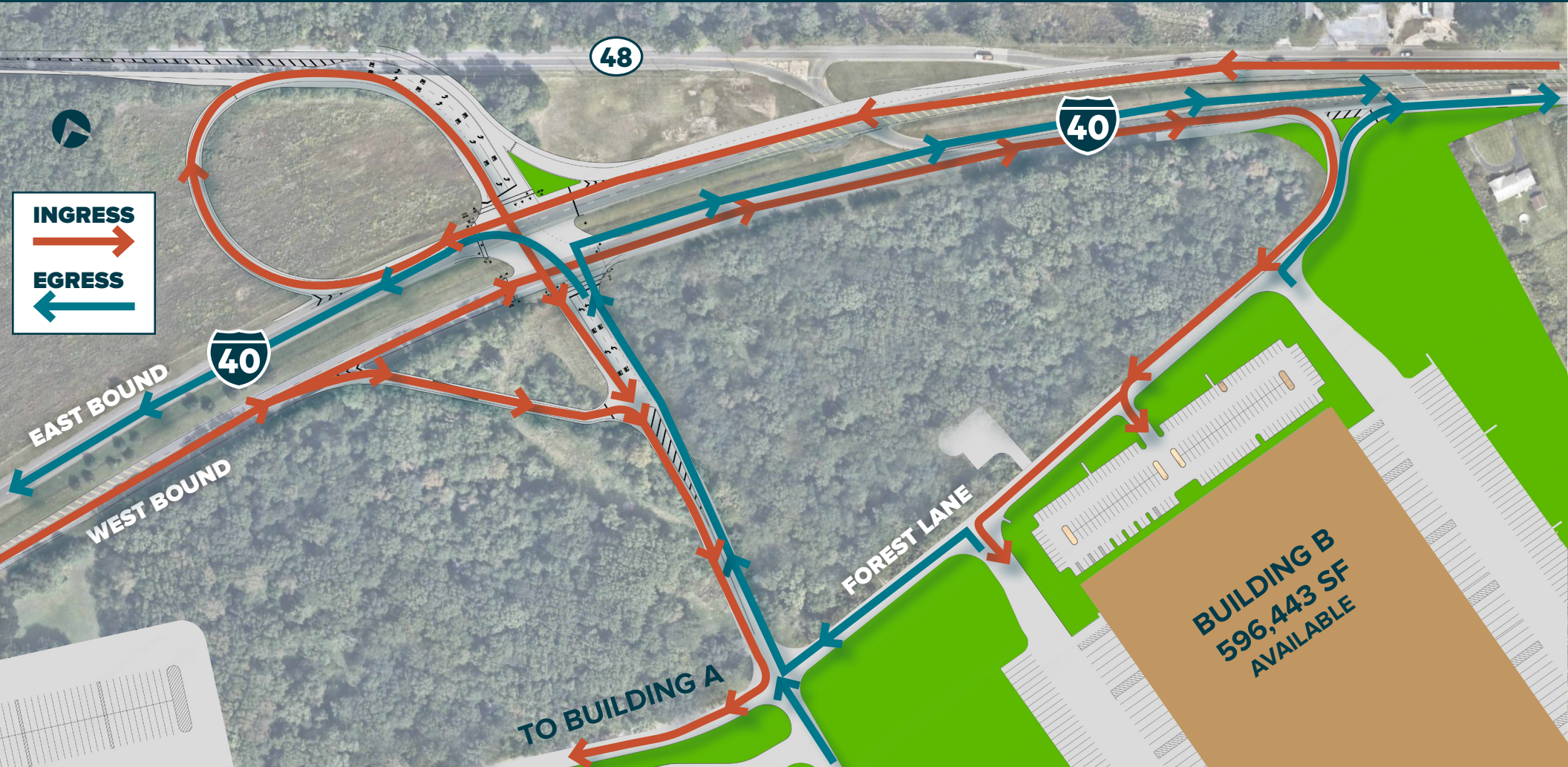
	BUILDING A	BUILDING B
TOTAL BUILDING SIZE	530,000 SF	596,443 SF
BUILDING DIMENSIONS	1,060' x 500'	1,230' x 495'
OFFICE	10,000 SF	10,000 SF
CEILING HEIGHT	40'	40'
COLUMN SPACING	50' x 54'	50' x 54'
SPEED BAY SIZE	60'	60'
DOCK DOORS	118 (9' x 10')	127 (9' x 10')
DRIVE-IN DOORS	4	4
CAR PARKING	295 spaces	363 spaces
TRAILER PARKING	206 spaces	122 spaces
SPRINKLER	ESFR	ESFR
POWER	2,500a at 480v/3-phase	2,500a at 480v/3-phase

**BUILDING A
OCCUPANCY
Q1 2025**

**BUILDING B
OCCUPANCY
Q2 2025**



ROADWAY IMPROVEMENTS



I-295
EXIT 4

2.7 MILES

NJ TPKE
EXIT 1

3.5 MILES

I-295
EXIT 2B

3.8 MILES



ROCKEFELLER GROUP LOGISTICS CENTER AT **CARNEYS POINT**

FOREST LANE, CARNEYS POINT, NJ

DREW GREEN

Senior Vice President
+1 610 251 5183
andrew.green@cbre.com

THOMAS F. MONAHAN

Vice Chairman
+1 201 712 5610
thomas.monahan@cbre.com

LARRY SCHIFFENHAUS

Executive Vice President
+1 201 712 5809
larry.schiffenhaus@cbre.com

BRIAN GOLDEN

Executive Vice President
+1 201 712 5607
brian.golden@cbre.com

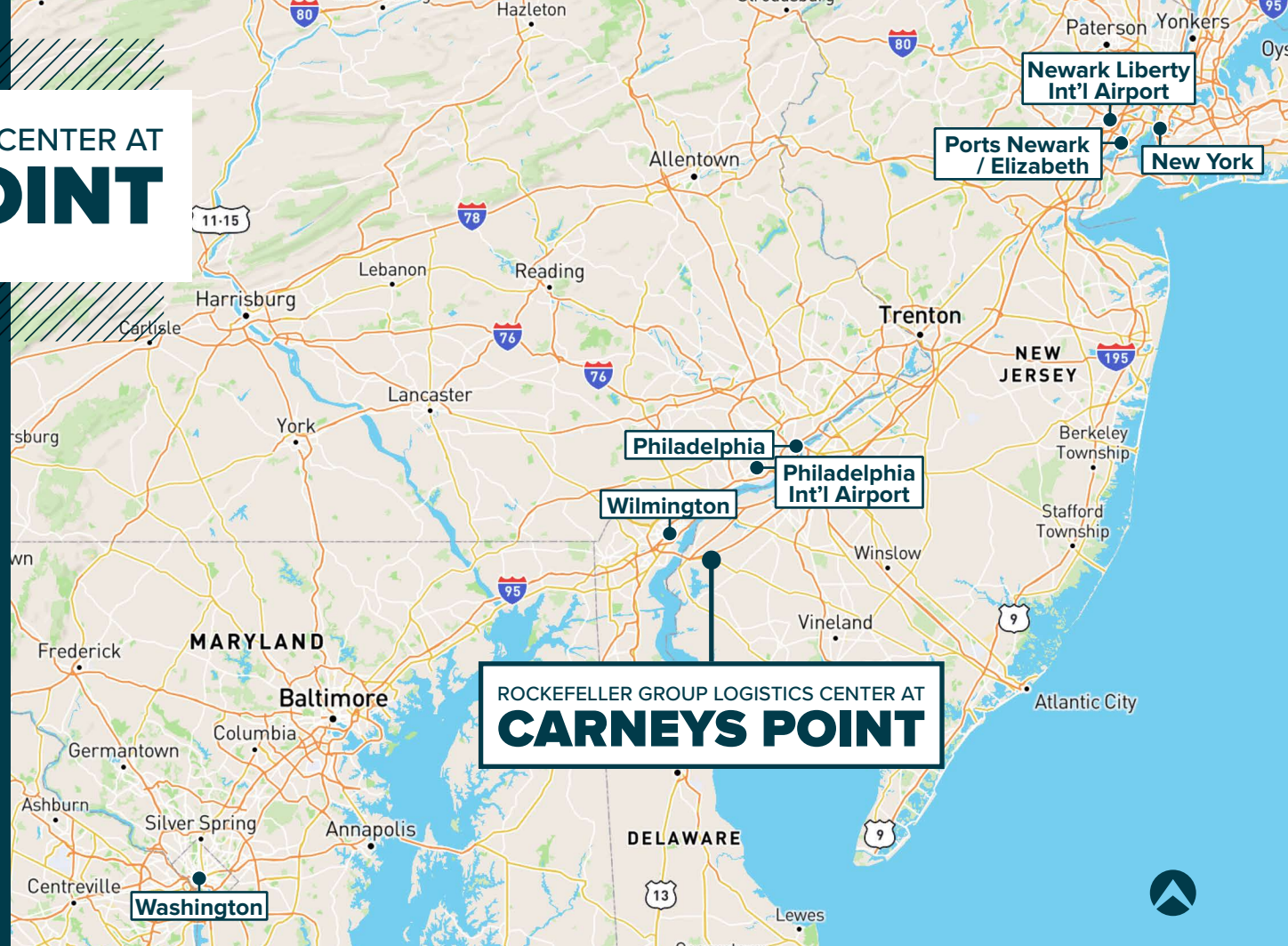


[ROCKEFELLERGROUPCARNEYSPOINT.COM](https://www.rockefellergroupcarneyspoint.com)

© 2024 CBRE, Inc. All rights reserved. This information has been obtained from sources believed reliable but has not been verified for accuracy or completeness. CBRE, Inc. makes no guarantee, representation or warranty and accepts no responsibility or liability as to the accuracy, completeness, or reliability of the information contained herein. You should conduct a careful, independent investigation of the property and verify all information. Any reliance on this information is solely at your own risk. CBRE and the CBRE logo are service marks of CBRE, Inc. All other marks displayed on this document are the property of their respective owners, and the use of such marks does not imply any affiliation with or endorsement of CBRE. Photos herein are the property of their respective owners. Use of these images without the express written consent of the owner is prohibited.

CBRE

**ROCKEFELLER
GROUP**



KEY DISTANCES

WILMINGTON, DE	11 MILES / 22 MIN
PHILADELPHIA INT'L AIRPORT, PA	23 MILES / 30 MIN
PHILADELPHIA, PA	34 MILES / 43 MIN
WASHINGTON, DC	115 MILES / 2 HR 14 MIN
NEW YORK CITY, NY	118 MILES / 2 HR 11 MIN
NEWARK LIBERTY INT'L AIRPORT, NJ	106 MILES / 1 HR 46 MIN
PORTS NEWARK / ELIZABETH, NJ	111 MILES / 1 HR 56 MIN