



H HERITAGE

INDUSTRIAL CENTER

FOR LEASE

HERITAGE INDUSTRIAL CENTER

3330, 3360 & 3390
HERITAGE ROAD, CHULA VISTA, CA

3 INDUSTRIAL BUILDINGS NOW UNDER CONSTRUCTION

ANTICIPATED COMPLETION JULY 2023

BUILDING A
±104,900 SF

BUILDING B
±55,700 SF

BUILDING C
±40,600 SF

MICHAEL MOSSMER, SIOR
Senior Vice President, Partner | Lic. #00998326
858.458.3347 | mmossmer@voitco.com

Voit
REAL ESTATE SERVICES

DEVELOPED BY
**ROCKEFELLER
GROUP**



- » First Floor Mezzanine Offices
- » Office and Shop Restrooms
- » 3 Freestanding Class A Industrial Buildings
- » Concrete around all buildings (truck court, drive aisle and parking area)
- » 28' - 32' Clear Height
- » ESFR Fire Sprinklers
- » Total Power: Between 3,000 - 4,000 Amps, 480/277 Volt, 3PH Power
- » 50' x 52' Typical Column Spacing

- » 6" Floor Slabs
- » Dock High Truck Doors
- » Grade Level Doors
- » Auto Parking Spaces (Average of Approximately 1.4/1,000)
- » Fenced, Secured Yard Potential
- » 11.64 Acres (Total)
- » Immediate Access to I-805, I-5 and SR-125 Freeways via Main Street or Olympic Parkway



BUILDING SPECIFICATIONS



3330 HERITAGE ROAD - BUILDING A

- » ±104,900 SF Freestanding Building
- » ±5,000 SF Office Including ±2,500 SF of Mezzanine Plus Office & Shop Restrooms
- » 32' Ceiling Clear Height at 1st Column
- » Skylights Throughout
- » ESFR Sprinkler System
- » Column Spacing 50' x 52'
- » 4,000 Amps of 277/480 Volt Power
- » Twelve (12) 9'x10' Dock Doors
- » Two (2) 12'x14' Grade Level Loading Doors
- » 6" Floor Slabs
- » 132 Auto Parking Spaces
- » Possible Secured Yard/Parking
- » 5.7 Acre Parcel
- » Immediate Access to I-805, I-5 and SR-125 Freeways via Main Street or Olympic Parkway
- » **Available July 2023 (Projected)**



3360 HERITAGE ROAD - BUILDING B

- » ±55,700 SF Freestanding Building
- » ±4,000 SF Office Including ±2,000 SF of Mezzanine Plus Office and Shop Restrooms
- » Can be combined with Building C for ±98,300 SF
- » 28' Ceiling Clear Height at 1st Column
- » Skylights Throughout
- » ESFR Sprinkler System
- » Column Spacing 50' x 52'
- » 3,000+ Amps 277/480 Volt Power
- » Eight (8) Dock Doors
- » Two (2) Grade Level Doors
- » 92 Parking Spaces
- » Possible Secured Yard/Parking
- » 3.48 Acre Parcel
- » Immediate Access to I-805, I-5 and SR-125 Freeways via Main Street or Olympic Parkway
- » **Available July 2023 (Projected)**



3390 HERITAGE ROAD - BUILDING C

- » ±40,600 SF Freestanding Building
- » Includes ±2,000 SF of Mezzanine
- » Can be combined with Building B for ±98,300 SF
- » Single Tenant Building
- » 28' Ceiling Clear Height at 1st Column
- » Skylights Throughout
- » ESFR Sprinkler System
- » Column Spacing 50' x 52'
- » 3,000+ Amps of 277/480 Volt Power
- » Four (4) Dock Doors
- » One (1) Grade Level Door
- » 6" Floor Slabs
- » 63 Parking Spaces
- » Possible Secured Yard/Parking
- » 2.46 Acre Parcel
- » Immediate Access to I-805, I-5 and SR-125 Freeways via Main Street or Olympic Parkway
- » **Available July 2023 (Projected)**

Voit

REAL ESTATE SERVICES

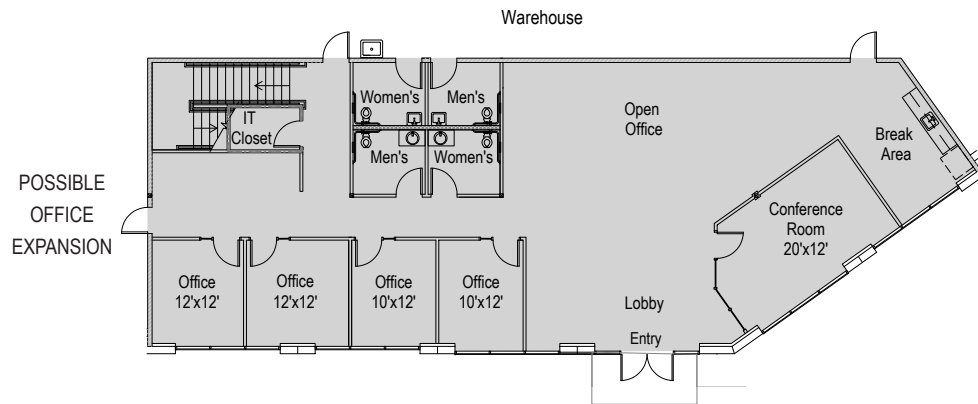
DEVELOPED BY

**ROCKEFELLER
GROUP**

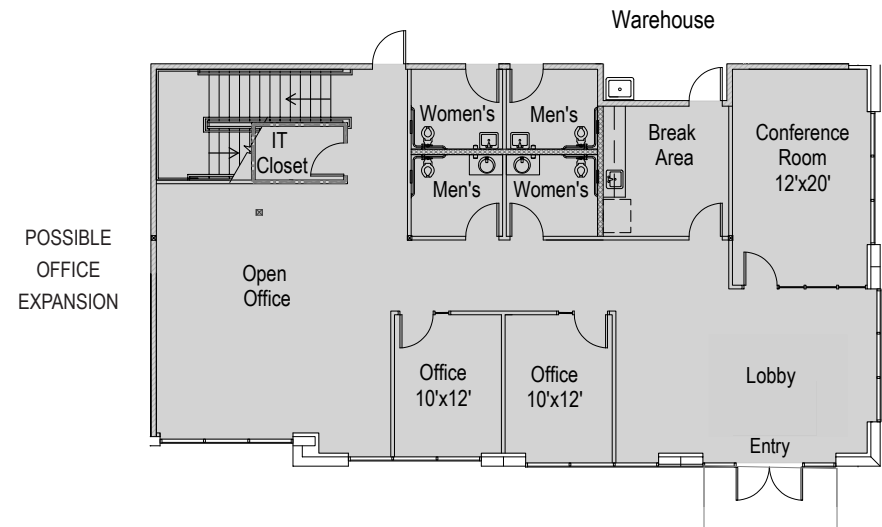
OFFICE BUILDOUT



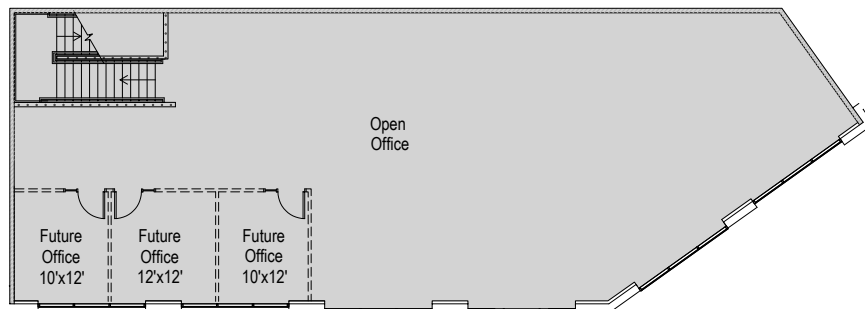
BUILDING A - FIRST FLOOR (±2,500 SF)



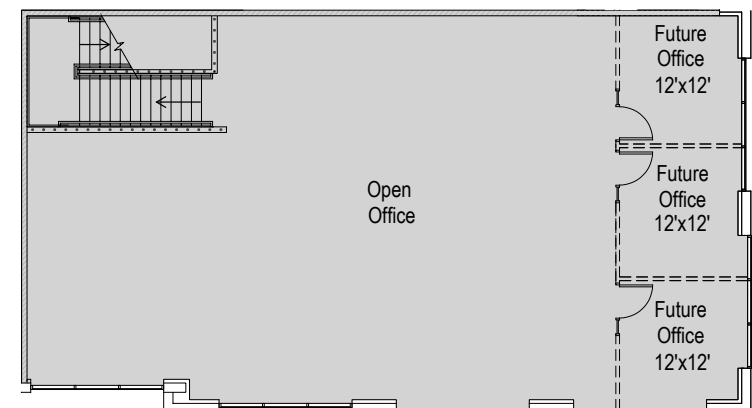
BUILDINGS B & C - FIRST FLOOR

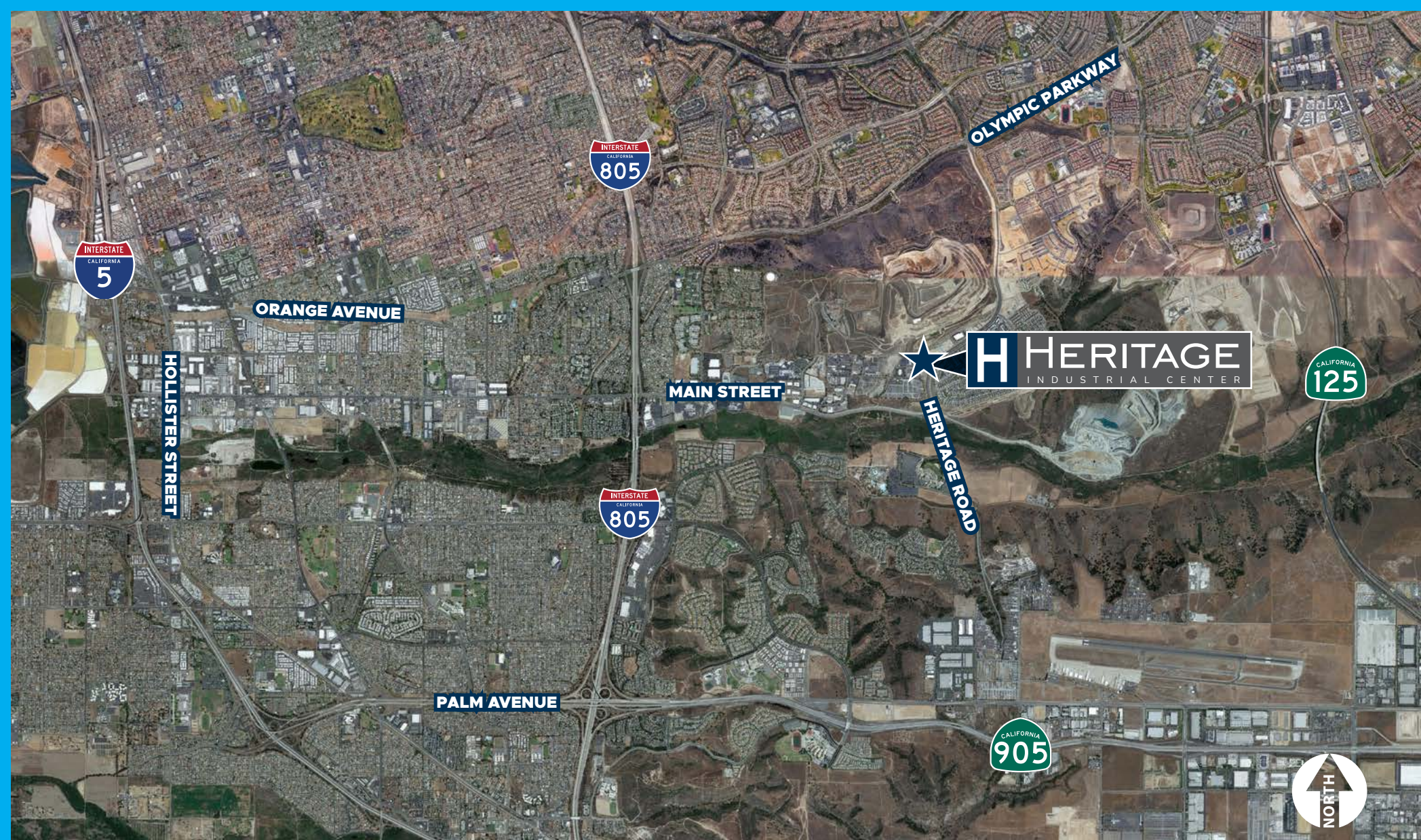


BUILDING A - SECOND FLOOR (±2,500 SF)



BUILDINGS B & C - SECOND FLOOR





EXCLUSIVE BROKER

MICHAEL MOSSMER, SIOR

Senior Vice President, Partner | Lic. #00998326

858.458.3347 | mmossmer@voitco.com

4180 La Jolla Village Drive, Suite 100, La Jolla, CA 92037 | 858.453.0505 | 858.408.3976 F | Lic #01991785 | www.voitco.com

Licensed as a Real Estate Salesperson by the DRE. The information contained herein has been obtained from sources we deem reliable. While we have no reason to doubt its accuracy, we do not guarantee it.
©2022 Voit Real Estate Services, Inc. All Rights Reserved.

Voit
REAL ESTATE SERVICES

DEVELOPED BY
**ROCKEFELLER
GROUP**